



Operational Review

Tim Kidd
Production Services Director
UKERNA



Agenda

- External Connectivity
- External Access Resilience
- Backbone
- Status of FE College connections
- NetSight
- CERT Structure
- Videoconferencing
- Usenet News

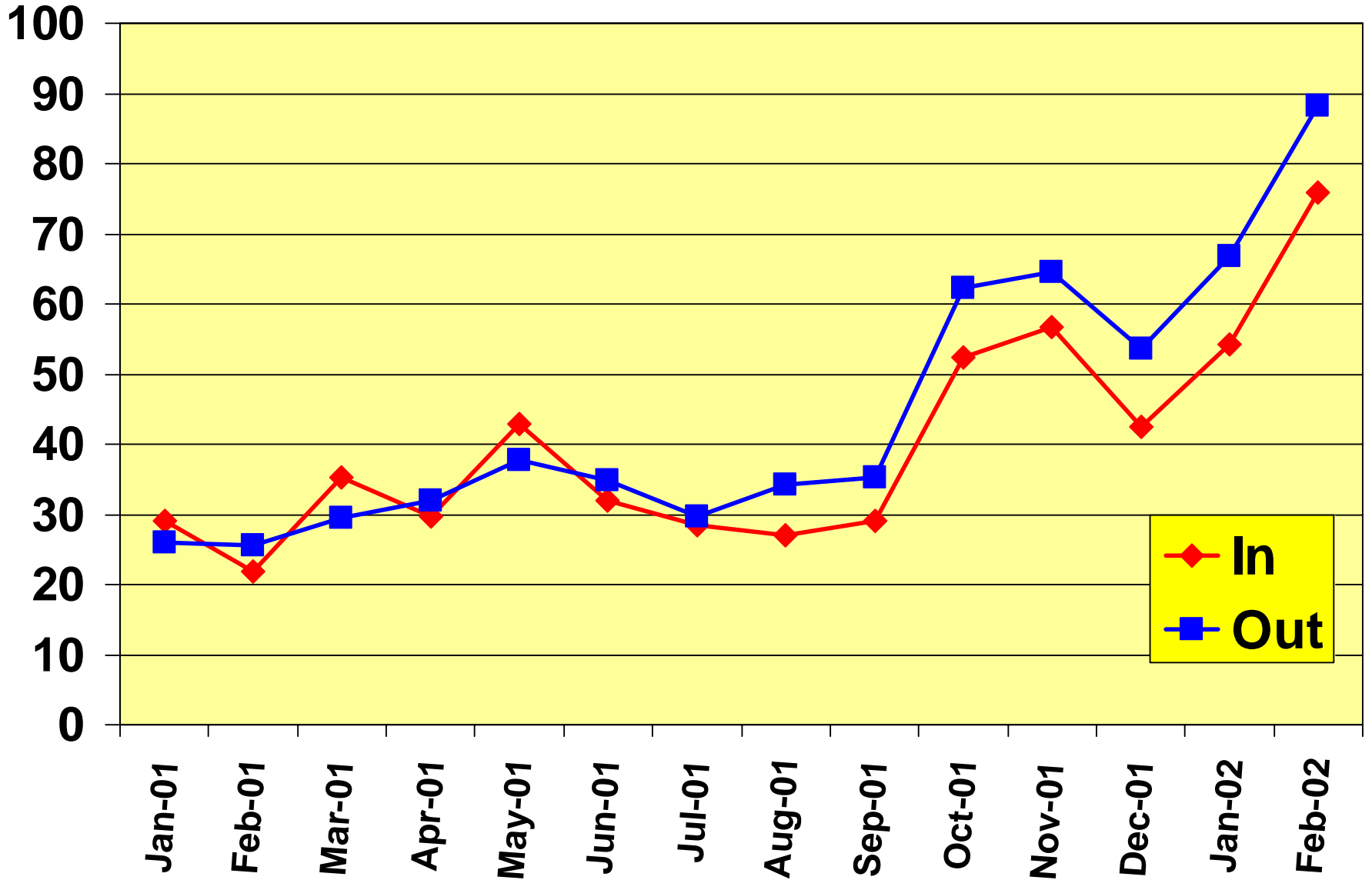


LINX

- Use increasing – now at the limit allowed for Gb ether connection.
- Second Gb ether connection soon.
- Increased the bandwidth of the private peering.
- Expect more private peering over the coming year.

GBytes

LINUX Usage



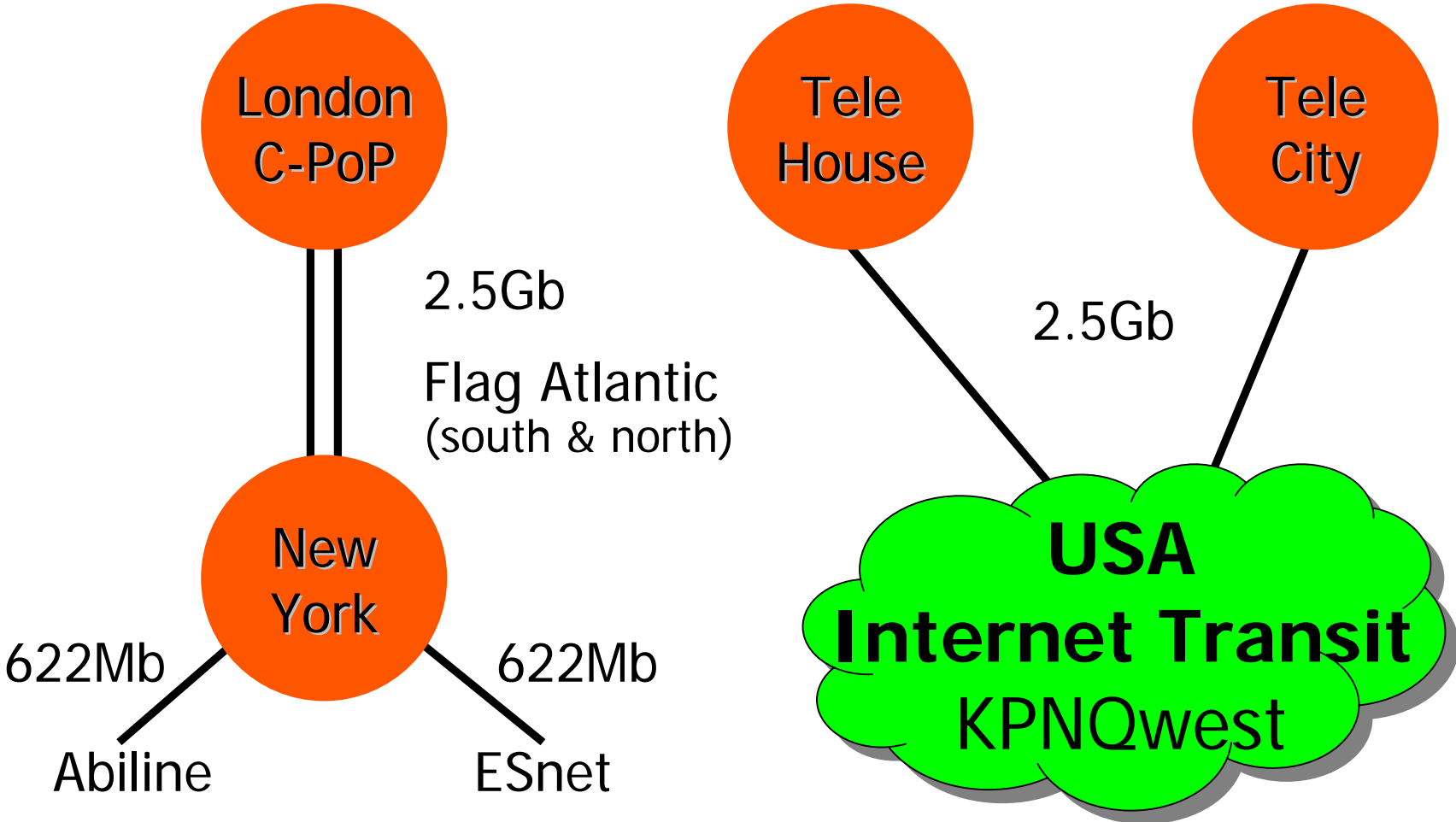


Global Internet Connectivity

- Traffic is increasing (!)
- ESnet and Abiline peering from 155Mbps to 622Mbps.
- Instability in Sept/Oct on old 6*155Mb Teleglobe links.
- New global internet connectivity installed early in the new year.

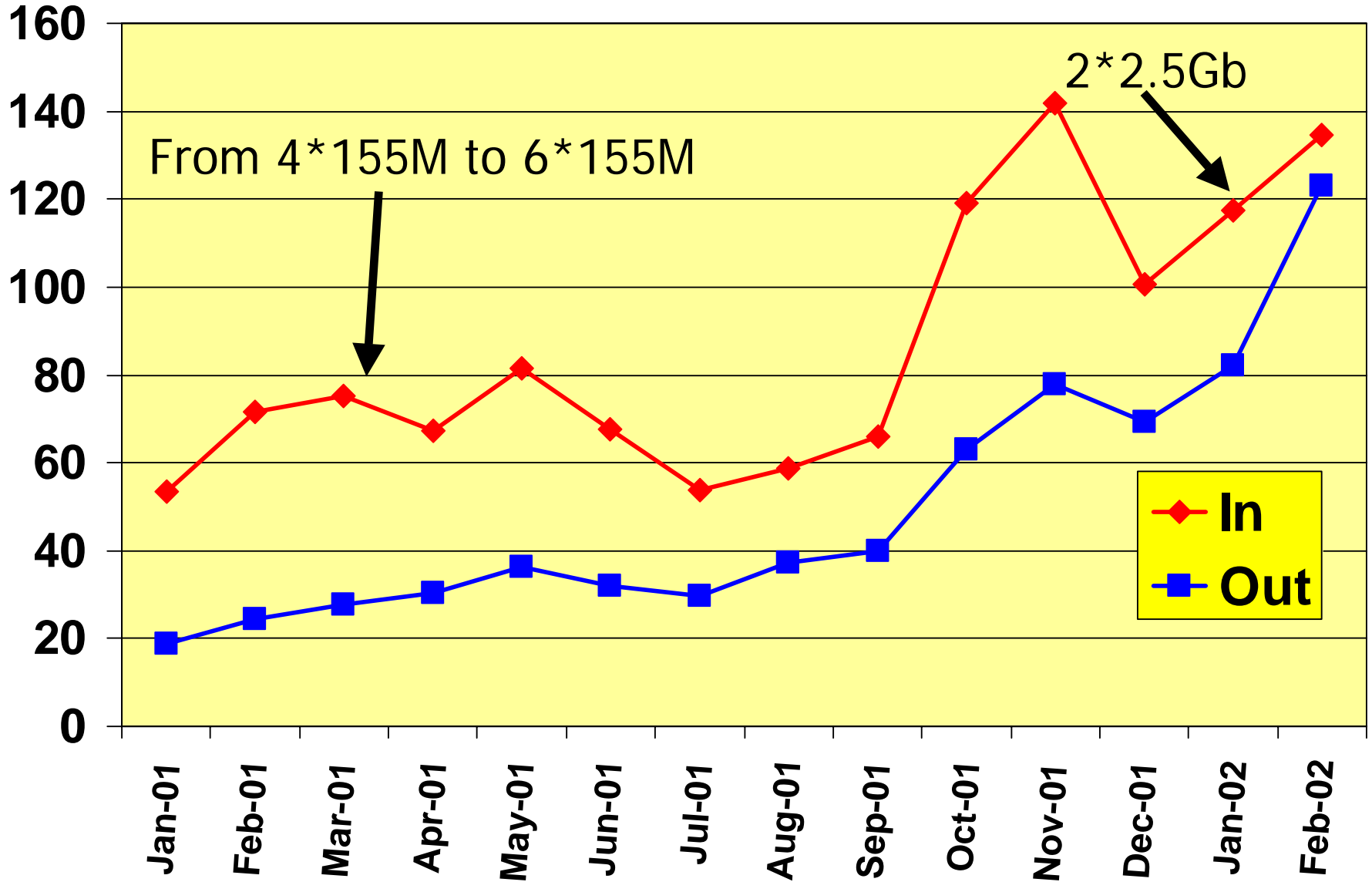


Global Internet Connectivity



GBytes

International Usage



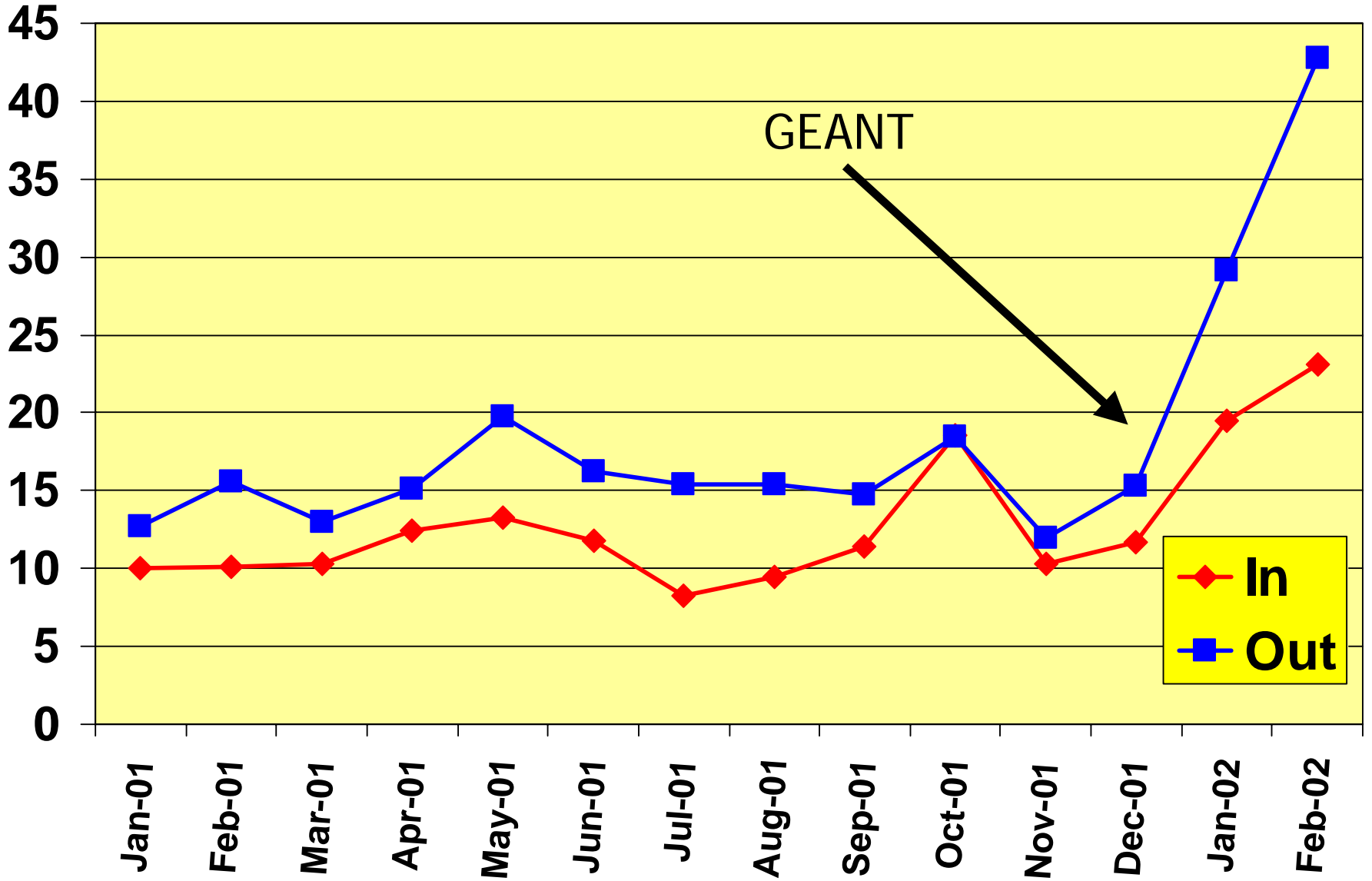


European Connectivity

- Use has increased following move from TEN-155 to GEANT.
- GEANT in service from 1 December.
- Stopped running TEN-155 on 31 November 2001.
- Thanks to ULCC staff for the smooth changeover.

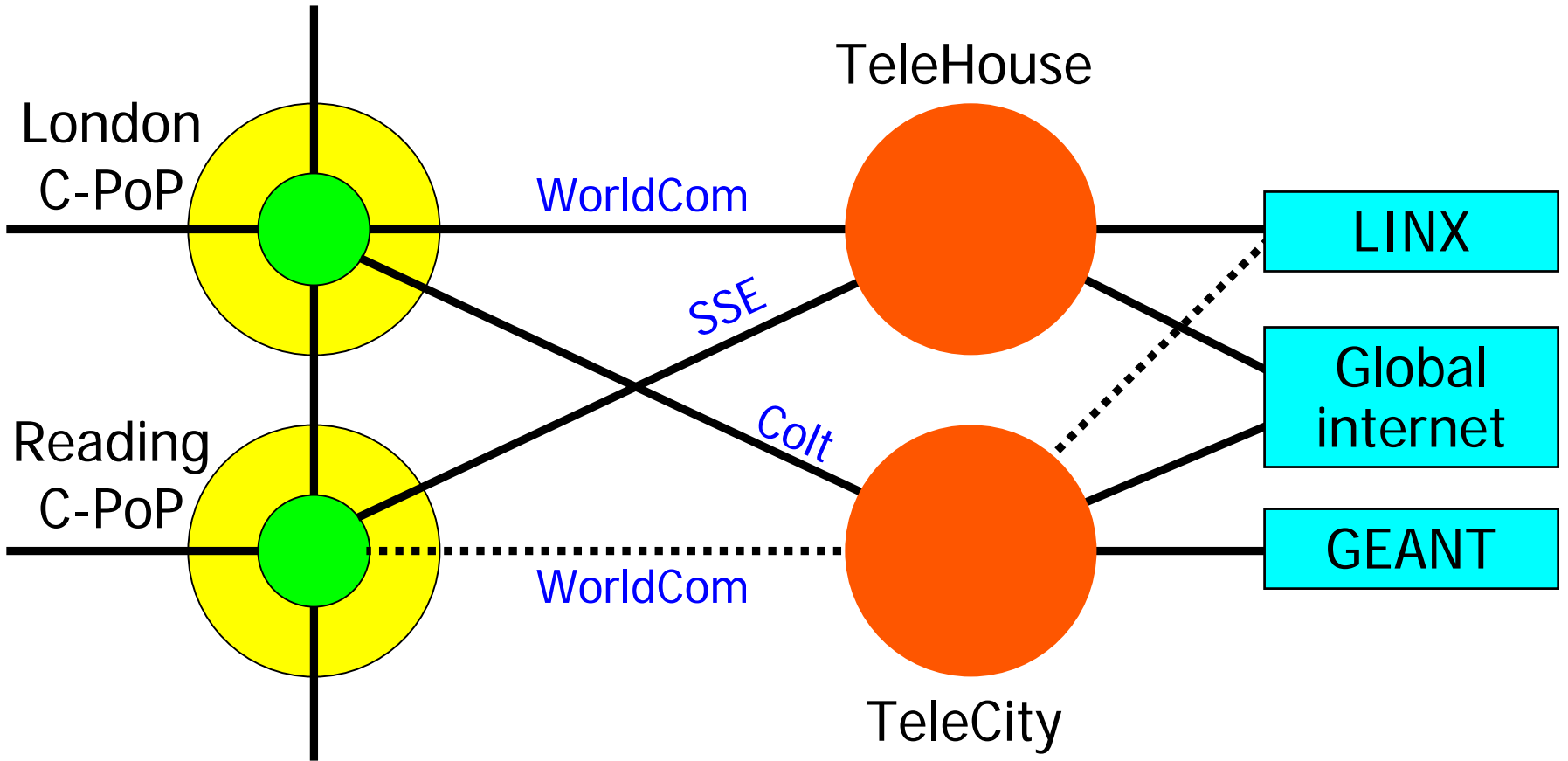
GBytes

European Usage





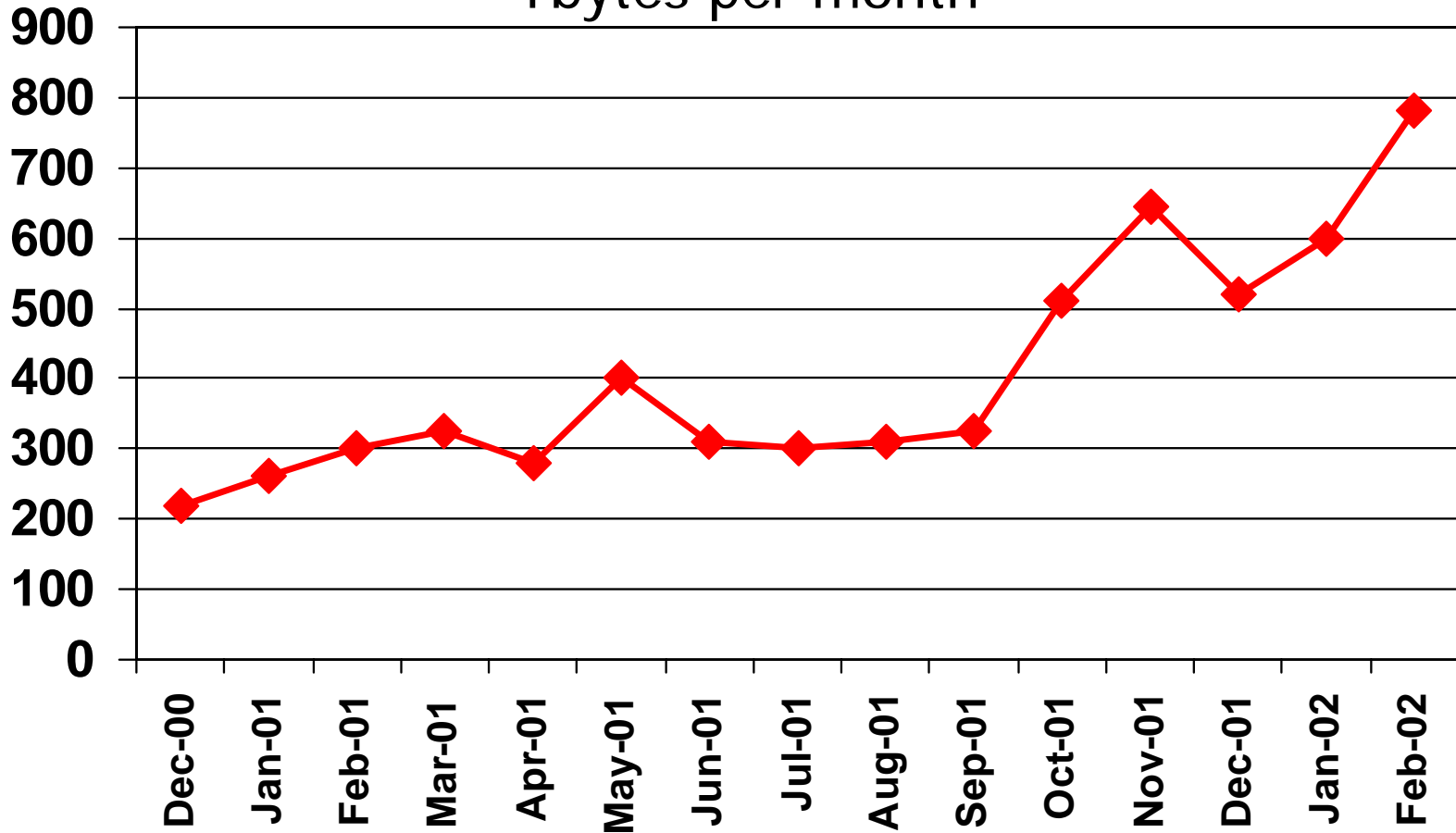
External Access Resilience





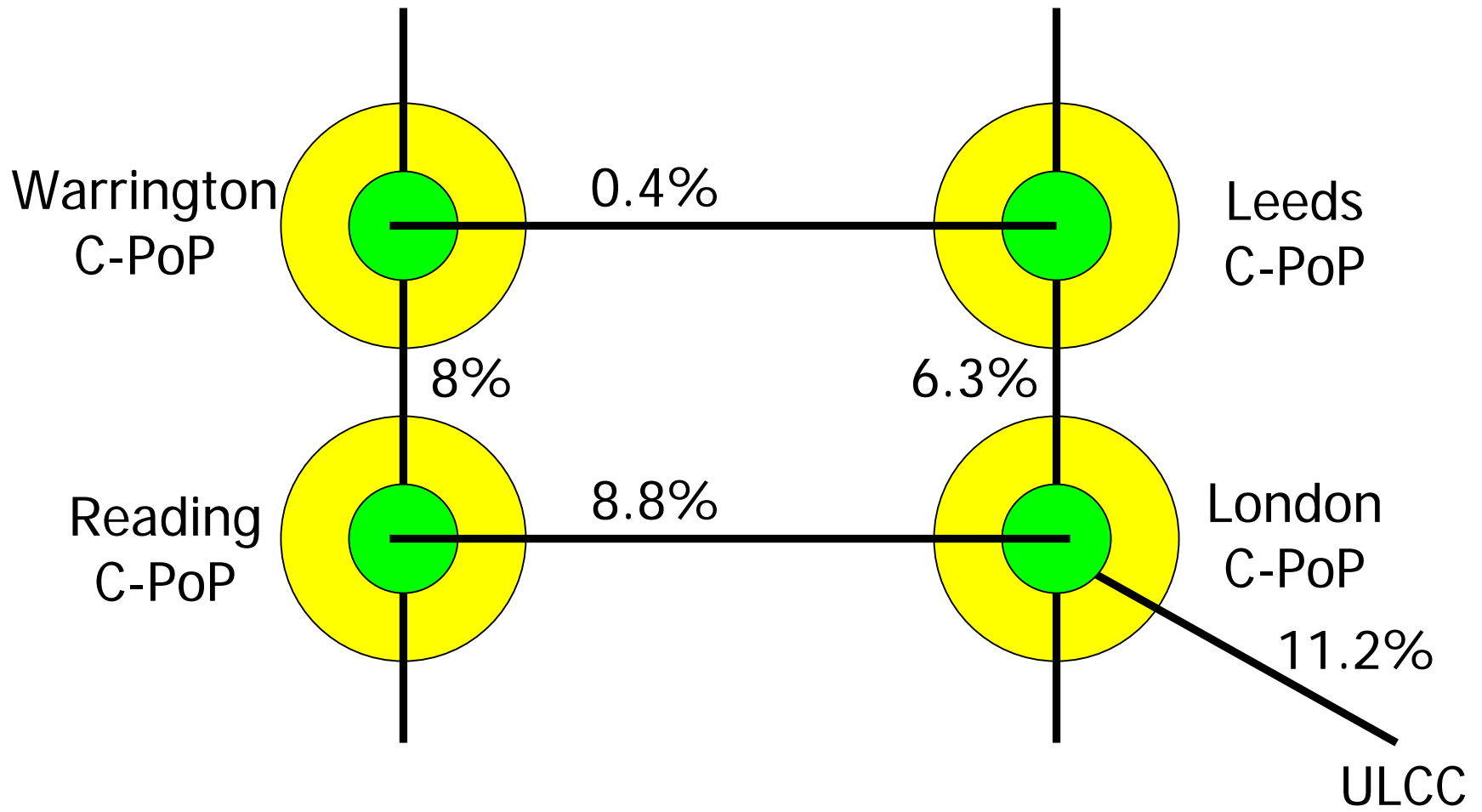
Total JANET Traffic

Tbytes per month



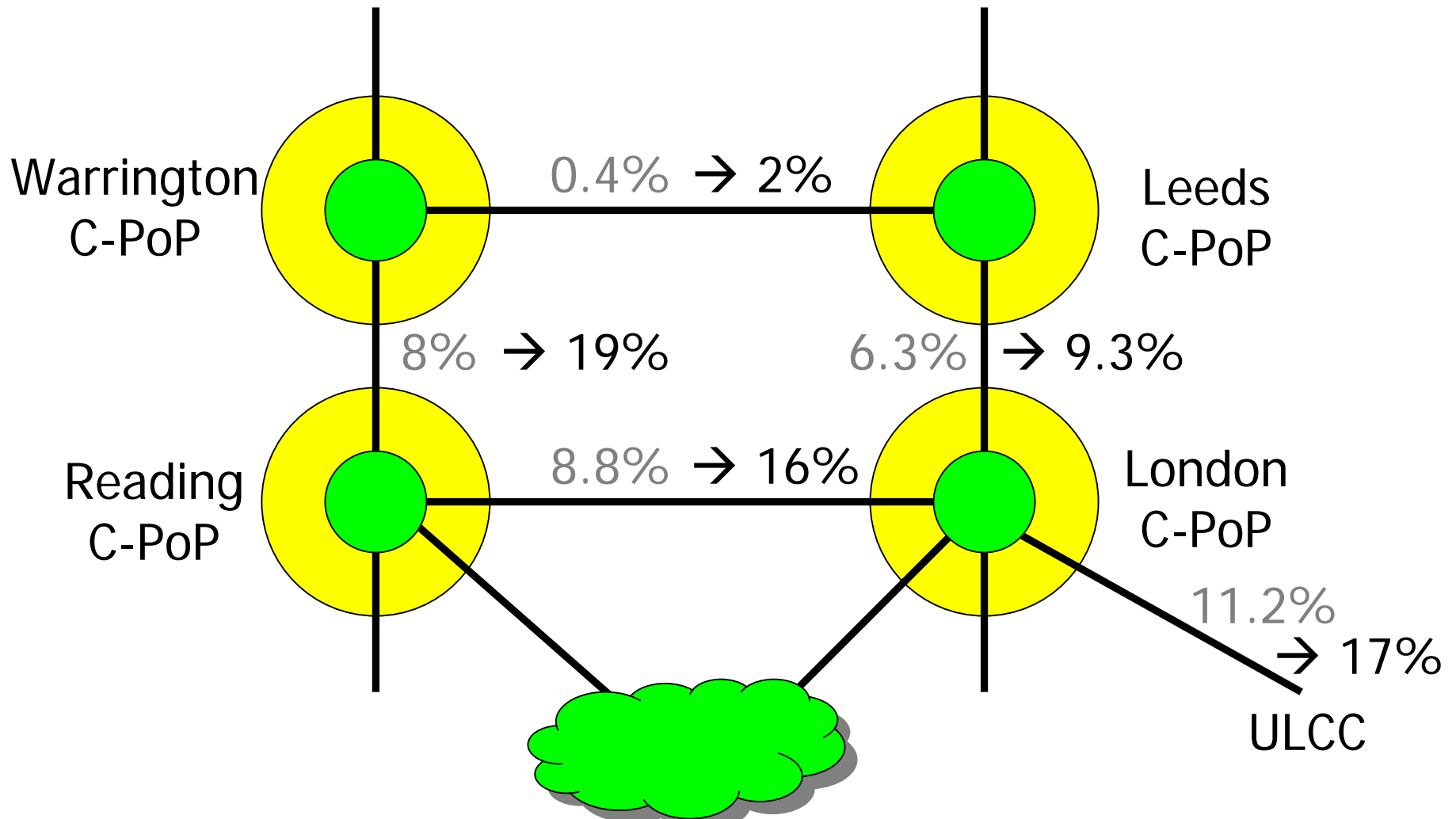


Backbone Traffic - June 2001





Backbone Traffic - Feb 2002





Backbone Resilience

- Some problems on the backbone over the past year.
- All “off-net” (contractors sub-contracted to WorldCom).
- Implemented improvement plans with WorldCom to solve the issues.
- An example...



EastNet Access Link

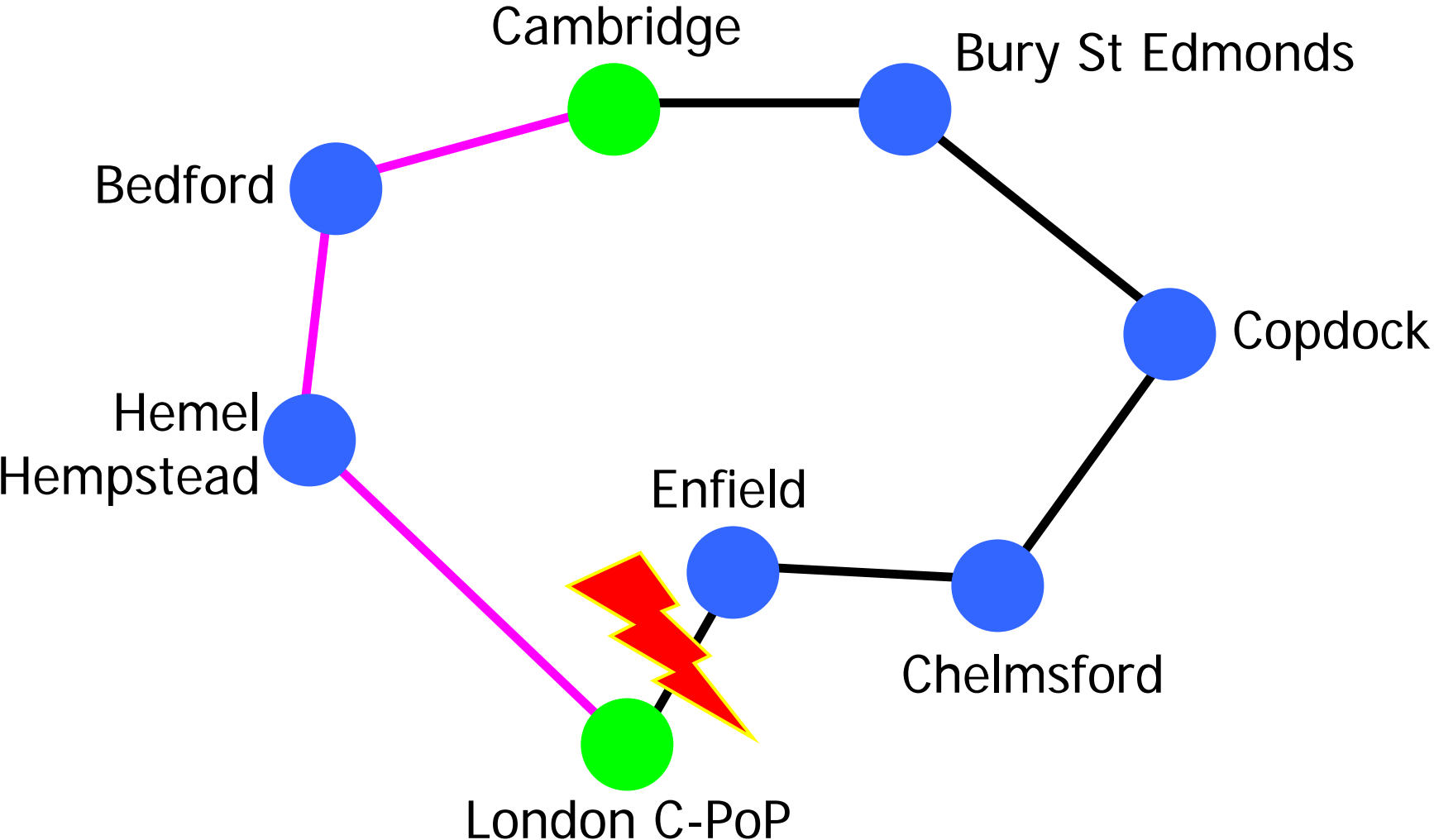
Link lost
for 15
hours in
January.

144
fibres
cut.





EastNet Access Link





Reliability

Concerns about reliability:

- Telcos:
 - People rather than technology.
 - Turbulence in the industry.
 - Take-overs and re-structuring.
- External connectivity



FE College Connections

- England: 410 of 415 connected.
- Scotland: all 47 connected.
- Wales: all 24 connected.
- Northern Ireland: all 17 connected.

Thanks to
regional networks and
Regional Support Centres
for invaluable help.

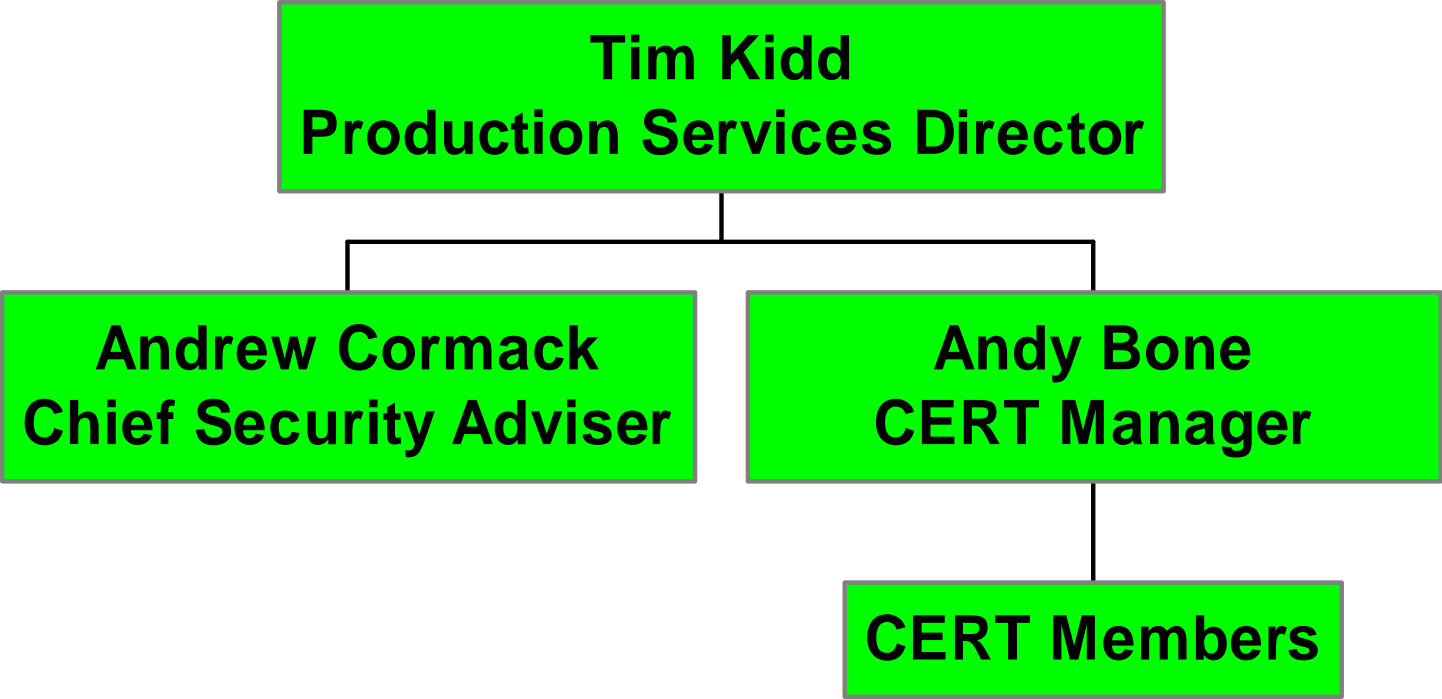


NetSight

- 17 (out of 22) in operation.
- Birmingham's recently delivered.
- UHI sorting out housing it.
- KentishMAN waiting for purchase of fast ethernet card for the BAR.
- Oxford and Reading systems still to be sent out.



CERT Structure





Videoconferencing

- Videoconferencing Management Centre to provide:
 - ISDN
 - IP
 - Gateways
- New contract for March 2003



Video Technology

- Video Technology Advisory Service (VTAS) available via JANET Customer Service.
- New documentation available soon:
 - Audio engineering for videoconferencing
 - Introduction to videoconferencing
- Advice on web: www.video.ja.net



Usenet News

- JANET News Reader Service started service September 2001.
- JANET News Cache Pilot Service.
 - Need another volunteer institution to take part.
 - Contact News Service Manager via JANET Customer Service service@ukerna.ac.uk



The Year Ahead

- Increase UK private peering.
- Enhance the problem escalation system.
- Increase contract management of our suppliers.
- Enhance information to users for problems and maintenance.